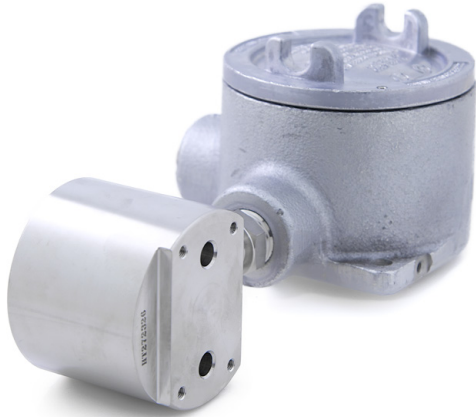


XHM300 Datasheet

HEATED MANIFOLD BLOCK



● Gas ● Liquid



INTRODUCING THE XHM300...

The XHM300 is a simple and compact heated manifold block to heat sample stream or probes with two 1/4" flow channels and a 1/8" NPT instrumentation port.

Certified to ATEX and IECEx, the XHM300 is approved for use in hazardous areas. Featuring a single 150W heater cartridge it is available with a choice of 115V or 230V power supply.

In addition, its electrical enclosure meets the requirements of IP66 and NEMA 4 specifications.

ATEX MARKING

The marking on the equipment includes the following information:

Ex II 2 G

Ex d IIC Gb T3 Ta = -40°C to +55°C

STANDARD MATERIALS OF CONSTRUCTION

PART	MATERIALS
Manifold Block	AISI 316/316L Stainless Steel (UNS S31600/S31603)
Electric Enclosure	Feraloy Iron Alloy

SPECIFICATION

Service	Gas or Liquid
Power Supply	115V or 230V
Weight	4kg (8.8lbs)

FEATURES AND BENEFITS

1 ATEX/IECEX CERTIFIED

Certified for use in hazardous areas.

2 ALTERNATIVE MATERIALS AVAILABLE

Manifold is available in other materials of construction to suit user's application.

3 COMPACT DESIGN

Small footprint for easy installation when space is restricted.

4 OPTIONAL POWER SUPPLY

115V or 230V power supply to suit user's system set-up.

NOTE: Product availability and specifications contained herein are subject to change without notice. Consult local distributor or factory for potential revisions and/or service related issues. Pressure Tech Ltd support with product selection recommendations only - it is the users responsibility to ensure the product is suitable for their specific application requirements.



DESIGNED AND BUILT IN THE UK

PRESSURE TECH LTD

Unit 24, Graphite Way, Hadfield, Glossop, Derbyshire, UK, SK13 1QH

T +44 (0)1457 899 307

E sales@pressure-tech.com

W www.pressure-tech.com

200320

PAGE:
1 OF 4

XHM300 Datasheet

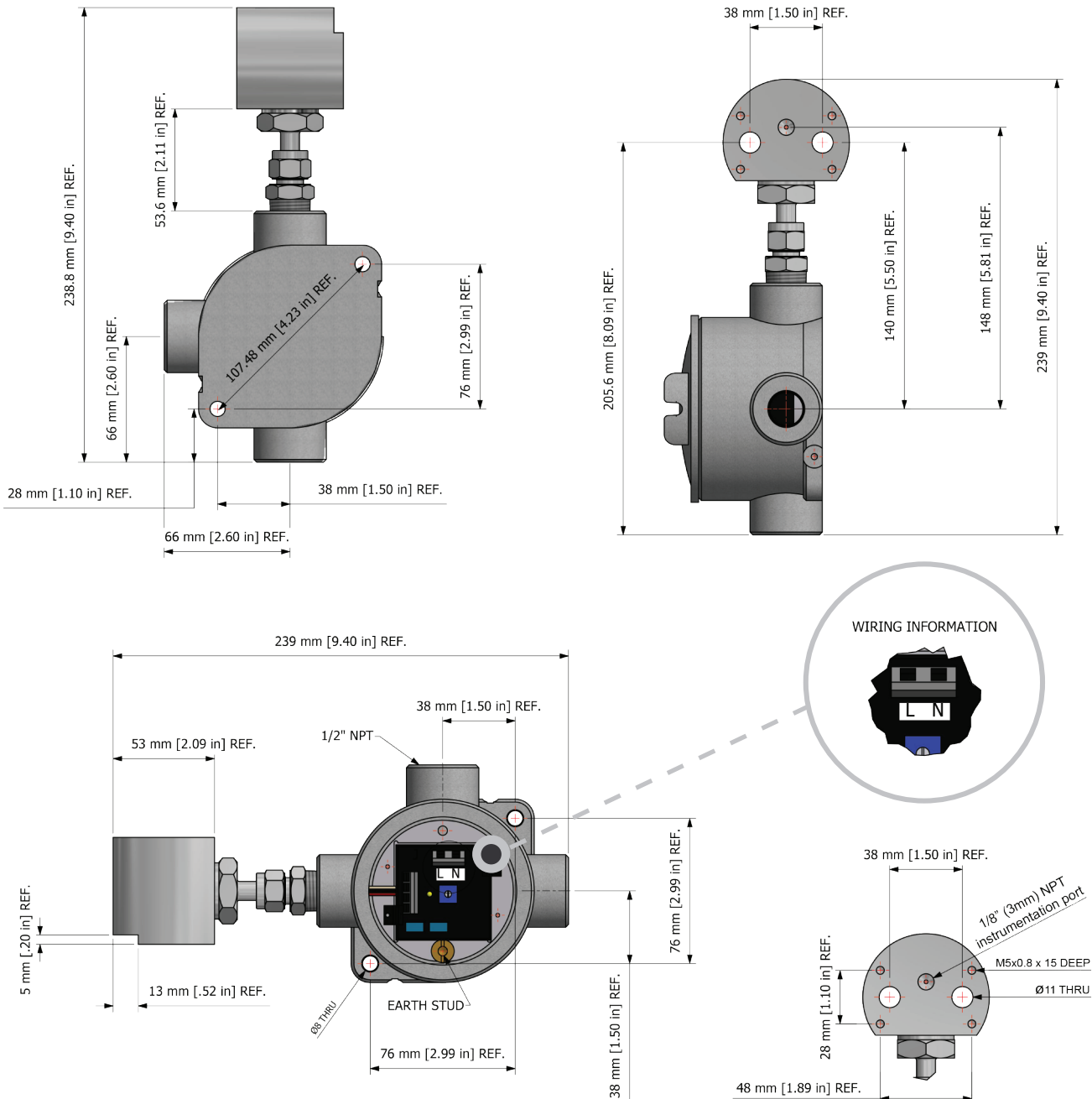
HEATED MANIFOLD BLOCK



● Gas ● Liquid

DRAWINGS AND INSTALLATION DIMENSIONS

Dimensions shown for 1/8" NPT option - please contact the office for additional connections options.



Note:
A narrower 32mm (1 1/4") version is available - please contact the office

NOTE: Product availability and specifications contained herein are subject to change without notice. Consult local distributor or factory for potential revisions and/or service related issues. Pressure Tech Ltd support with product selection recommendations only - it is the users responsibility to ensure the product is suitable for their specific application requirements.



DESIGNED AND BUILT IN THE UK

PRESSURE TECH LTD
Unit 24, Graphite Way, Hadfield, Glossop, Derbyshire, UK, SK13 1QH
T +44 (0)1457 899 307
E sales@pressure-tech.com
W www.pressure-tech.com

200320

PAGE:
2 OF 4

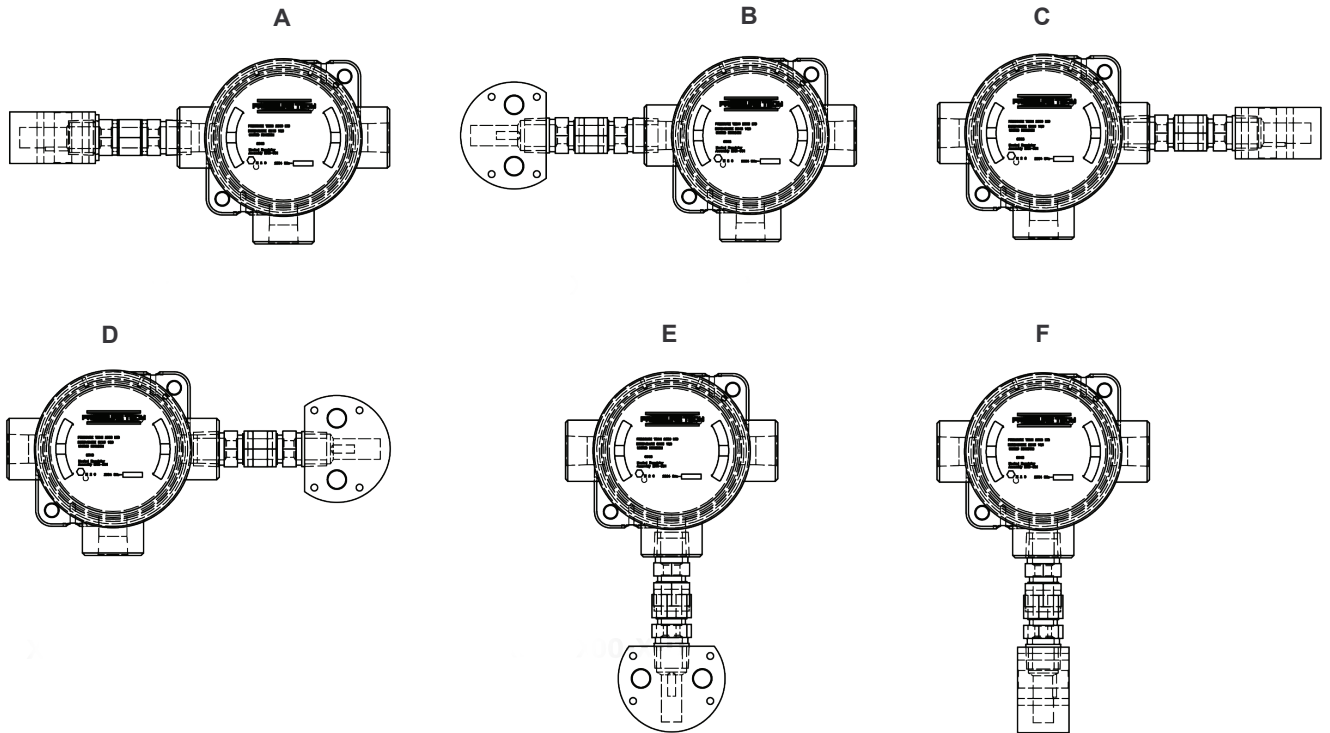
XHM300 Datasheet

HEATED MANIFOLD BLOCK



Gas Liquid

ASSEMBLY CONFIGURATIONS



Notes:

Additional assembly configurations are available - please contact the office for further information.

NOTE: Product availability and specifications contained herein are subject to change without notice. Consult local distributor or factory for potential revisions and/or service related issues.
Pressure Tech Ltd support with product selection recommendations only - it is the users responsibility to ensure the product is suitable for their specific application requirements.

3 OF 4



DESIGNED AND BUILT IN THE UK

PRESSURE TECH LTD

Unit 24, Graphite Way, Hadfield, Glossop, Derbyshire, UK, SK13 1QH
T +44 (0)1457 899 307
E sales@pressure-tech.com
W www.pressure-tech.com

200320

PAGE:

XHM300 Datasheet

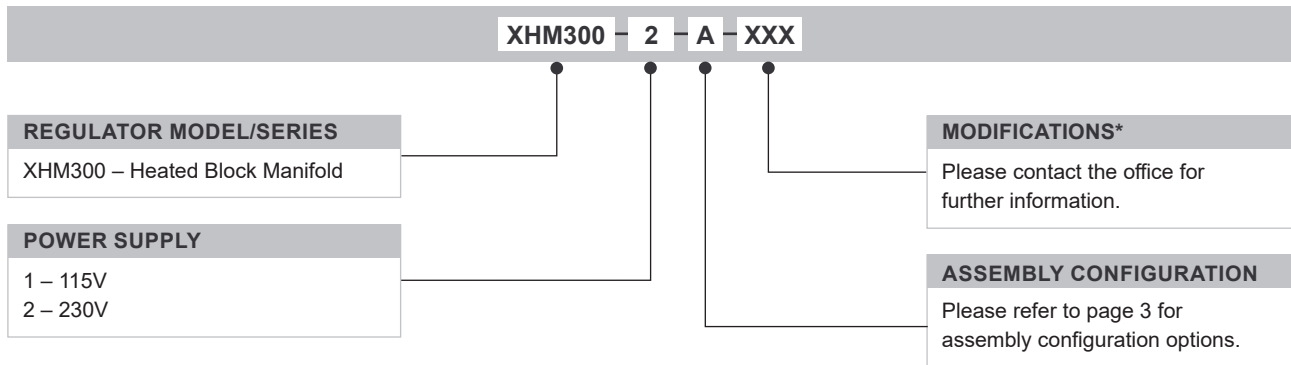
HEATED MANIFOLD BLOCK



Gas Liquid

ORDERING INFORMATION

To build a Pressure Tech part number, simply combine the characters identified below in sequence:



* Where applicable

NOTE: Product availability and specifications contained herein are subject to change without notice. Consult local distributor or factory for potential revisions and/or service related issues. Pressure Tech Ltd support with product selection recommendations only - it is the users responsibility to ensure the product is suitable for their specific application requirements.



DESIGNED AND BUILT IN THE UK

Haldatec

Phone: +61 3 9872 5822 Email: sales@haldatec.com.au Website: www.haldatec.com.au

200320

PAGE:
4 OF 4